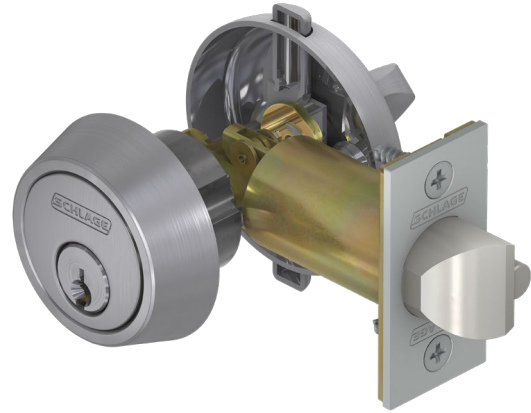


# B250 Series

## Grade 2 Deadlatch

### OVERVIEW

Ideally suited for pool, apartment and condominium gates, utility panels and pipe chases, the Schlage B250 Series is tough, reliable and has a proven design that has been the industry standard for decades.



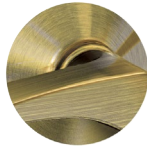
### FINISHES



605  
Bright Brass



606  
Satin Brass



609  
Antique Bronze



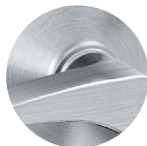
613  
Oil Rubbed  
Bronze



622  
Matte Black



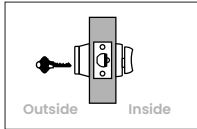
625  
Bright Chrome



626  
Satin Chrome

## LOCK FUNCTIONS

**Schlage**  
**B250**

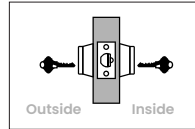


**Single cylinder  
deadlatch**

- Deadlatch retracted by key outside or thumbturn inside
- Holdback feature standard
- Rotating thumbturn and activating holdback feature keeps latch retracted

**ANSI**  
**E0122**

**Schlage**  
**B252**



**Double cylinder  
deadlatch**

- Deadlatch retracted by key either side
- No holdback

Caution: Double cylinder locks on residences and any door, in any structure, which is used for egress are a life safety hazard in times of emergency and their use is not recommended. Installation should be in accordance with existing codes only.

**ANSI**  
**E0112**

## CYLINDERS

### Conventional cylinder options

P6	6-pin Conventional, keyed 6 (standard)
P	6-pin Conventional, keyed 5
Z	SL 7-pin Conventional (A2 pinning)
L	Less Conventional

### Full size interchangeable core (FSIC) cylinder options

R	6-pin FSIC
M	SL 7-pin FSIC (A2 pinning)
J	Less FSIC
T	Refundable FSIC construction core

## SPECIFICATIONS

Trim	
Material	Wrought or forged brass or bronze, or pressure cast zinc
Door thickness	1-1/2" to 1-3/4" (38 mm to 44 mm) standard. Available to 2-1/4" (57 mm), assembled to order.

Deadlatch	
Backset	Standard: 2-3/8" (60 mm) Optional: 2-3/4" (70 mm)
Faceplate	1-1/8" x 2-1/4" (29 mm x 57 mm) square corner, beveled. Brass, bronze or stainless steel.
Bolt	Brass, 9/16" (14 mm) throw, deadlocking on keyed and exterior functions.
Strike	1-1/8" x 2-3/4" (32 mm x 70 mm) with steel reinforcer and two 3" screws standard.

Keying	
Cylinder format	6-pin Conventional (standard); also available in FSIC and 7-pin SL cylinder.
Keyway	Patented Everest 29 S123 (standard); also available in open, restricted, and Primus XP security levels with available master keying and construction keying.

Attachment	
	Three 3" screws metal dustbox to frame. 1/4" machine screws through bolt to firmly anchor lock to door.

Warranty	
	3-year limited mechanical warranty. See price book for details.

Certifications	
ANSI/BHMA	A156.36-2010, Grade 2. BMHA certified.
Federal	BAA compliant.
Other	ADA compliant.