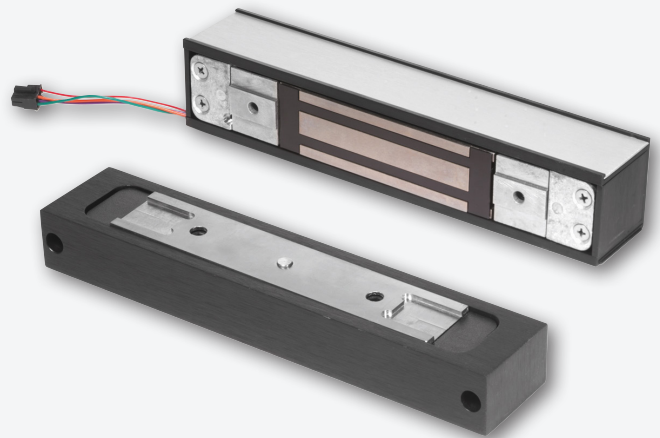


GF3000

Surface Mounted Shear Lock



Overview

GF3000 Series shear locks' patented design provides powerful holding force in low profile models for inswinging and outswinging doors. A microprocessor-based control module provides advanced electronic features. This circuitry automatically senses and adjusts input voltage, allowing for operation from 12 to 24 volt DC power sources.

The lightweight, black anodized housing can be quickly mounted without need of brackets and is finished off with a satin aluminum decorative plate for a clean look.

Features & Benefits

- 3000 lb. hold force rating
- Automatic voltage selection (AVS) 12/24 VDC (filtered and regulated)
- Built-in automatic relock switch
- Adjustable time delay on relock, 2-30 seconds
- Low temperature operation
- Microprocessor controlled
- Optional Magnetic Bond Sensor (MBS) and Door Status Monitor (DSM) to monitor the secure/not secure condition of the lock and to sense the open/closed position of the door
- Housing is black anodized with BHMA 628 satin aluminum decorative plate
- ANSI/BHMA 156.23, UL 10C, cUL, and CSFM certifications
- Limited lifetime warranty on magnetic coil assembly

GF3000 Surface Mounted Shear Lock Specifications

Specification	GF3000SM	GF3000TJ
Holding force	3000 lbs.	3000 lbs.
Door type	Outswinging	Inswinging
Current draw	.90A @ 12 VDC .45A @ 24 VDC	.90A @ 12 VDC .45A @ 24 VDC
Lock housing (L x H x D)	9-13/16" x 1-1/4" x 1-1/2"	9-13/16" x 1-1/4" x 1-1/2"
Armature housing (L x H x D)	8-3/8" x 1-3/8" x 1/2"	8-3/8" x 1-3/8" x 1/2"
Weight	9 lbs.	9 lbs.
Certifications	UL 10C, cUL, CSFM, ANSI/BHMA 156.23	UL 10C, cUL, CSFM, ANSI/BHMA 156.23

Ordering Information

- **GF3000SM (Surface Mounted):** Surface mounted shear lock intended for use on outswinging doors. Surface mounted magnet mounts under header and surface mounted armature assembly mounts into door just under magnet assembly. Air gap adjustment is from top of door
- **GF3000TJ (Top Jamb):** Surface mounted shear lock intended for use on inswinging doors that are flush with frame's inner face. Surface mounted armature assembly mounts onto top of door or top rail and surface mounted magnet mounts onto frame's face. Air gap adjustment is from top of door.

Options

- **DSM/MBS** - Door Status Monitor/Magnetic Bond Sensor