



Offline Wireless Locks Solution

Featuring XE360™ Series & ENGAGE™ Access Control



Solution Overview

The XE360™ Series by Schlage® is a next-generation wireless lock with built-in intelligence for easy and efficient access management across buildings or properties. Available in tubular, mortise, mortise deadbolt and exit trim models, it suits a variety of applications—including perimeter, common areas, offices, unit entries and amenities.

The free ENGAGE™ cloud-based web and mobile applications simplify the ability to connect people, openings and access management to deliver cost effective intelligence and efficiency to any facility. ENGAGE enables convenient site set-up via the ENGAGE mobile app, as well as the ability to manage users, assign access privileges and view audits and alerts.

This unique solution offers many benefits including:

- The sleek design of the XE360 offers customers a solution that looks as good as it performs – at an affordable price point
- Full solution provides increased visibility and control across an entire site or property including perimeter doors with compatible exit devices
- Increased convenience and satisfaction with MIFARE® DESFire® or Bluetooth® mobile credential use
- Manage updates to XE360 Series devices either at the door using the ENGAGE mobile app or by programming No-Tour credentials
- Open architecture and Flex Module™ design allows the XE360 devices to be upgraded to work with one of our PACS or Proptech Alliances in the future

Features & Benefits

XE360

- No-Tour or offline system capability
- Available with LED indicator, interior push button or deadbolt with thumbturn
- Advanced encryption keeps data and communications safe
- Concealed key override to deter from tampering, standard on all locks
- Works seamlessly with other ENGAGE ecosystem devices such as Schlage Control® smart locks, NDE, LE and CTE
- Credential support includes Schlage MIFARE DESFire and Schlage Bluetooth mobile

ENGAGE

- Free ENGAGE software is scalable from a few openings to hundreds of openings across multiple buildings
- ENGAGE web and mobile apps make it easy to control who has access – when and where

Ready For the Future With the Innovative Flex Module™

When the need arises to transition from an offline to a persistent (real-time) Wi-Fi® connected solution in the future, simply replace the Flex Module and you will be ready to connect the XE360 locks to a new PACS or Proptech Alliance system.

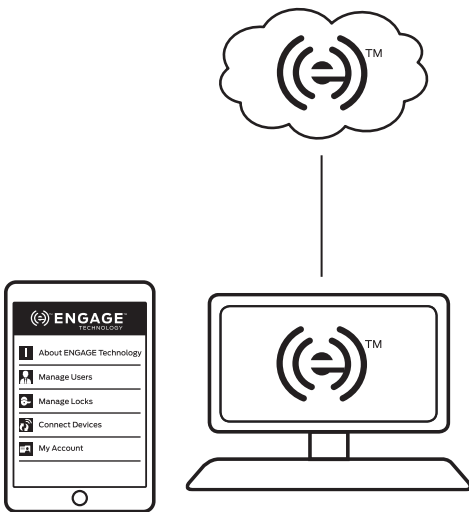
Note: The ENGAGE Access Control solution only supports XE360 Series Offline and No-Tour applications; future Wi-Fi connectivity will require a new Flex Module and compatible software from one of our PACS or Proptech Alliances.



Manage Access

Manage your site from anywhere with ENGAGE cloud-based web and mobile applications.

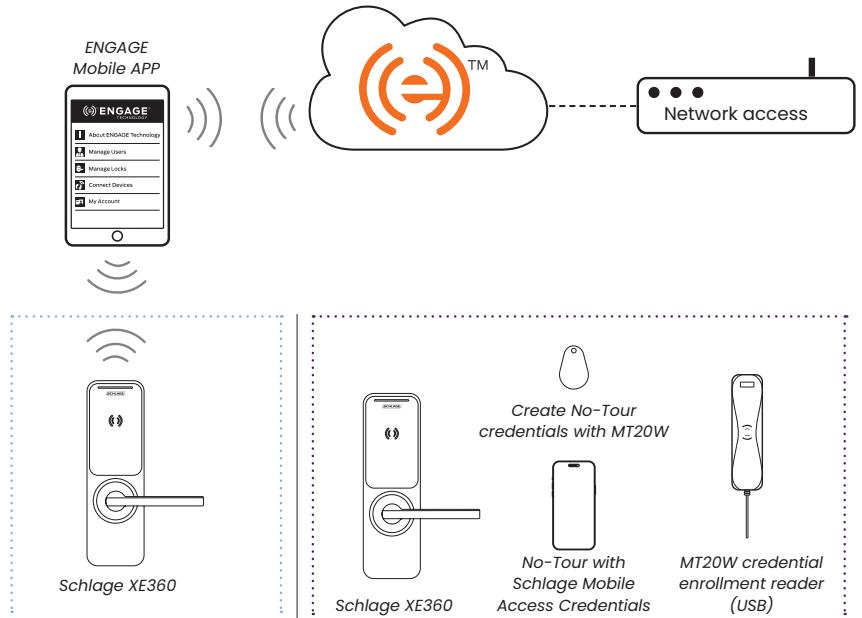
- Configure lock/device settings
- Add new users and enroll credentials
- Manage users and assign access privileges
- Set lock/device schedules, holidays, user schedules
- View and export audits and alerts
- Invite others to assist with administration



Update Locks & Devices

Send updates wirelessly at the lock with the ENGAGE mobile application on a Bluetooth enabled smart phone, tablet, or leverage the built-in No-Tour capability to send updates without visiting the lock or device.

- Update access rights
- Update lock/device settings
- Update firmware
- Perform diagnostics
- Add new locks or devices
- View audits



Immediate updates

Send updates at the lock anytime with the ENGAGE mobile app.

No-Tour via smart credentials

Eliminate the need to visit locks by using 13.56 MHz smart or Schlage Mobile Credentials to deliver updates to access rights.



Seamlessly works with Schlage MIFARE® & MIFARE® DESFire® cards, wristbands, fobs and Schlage Bluetooth® mobile credentials.

