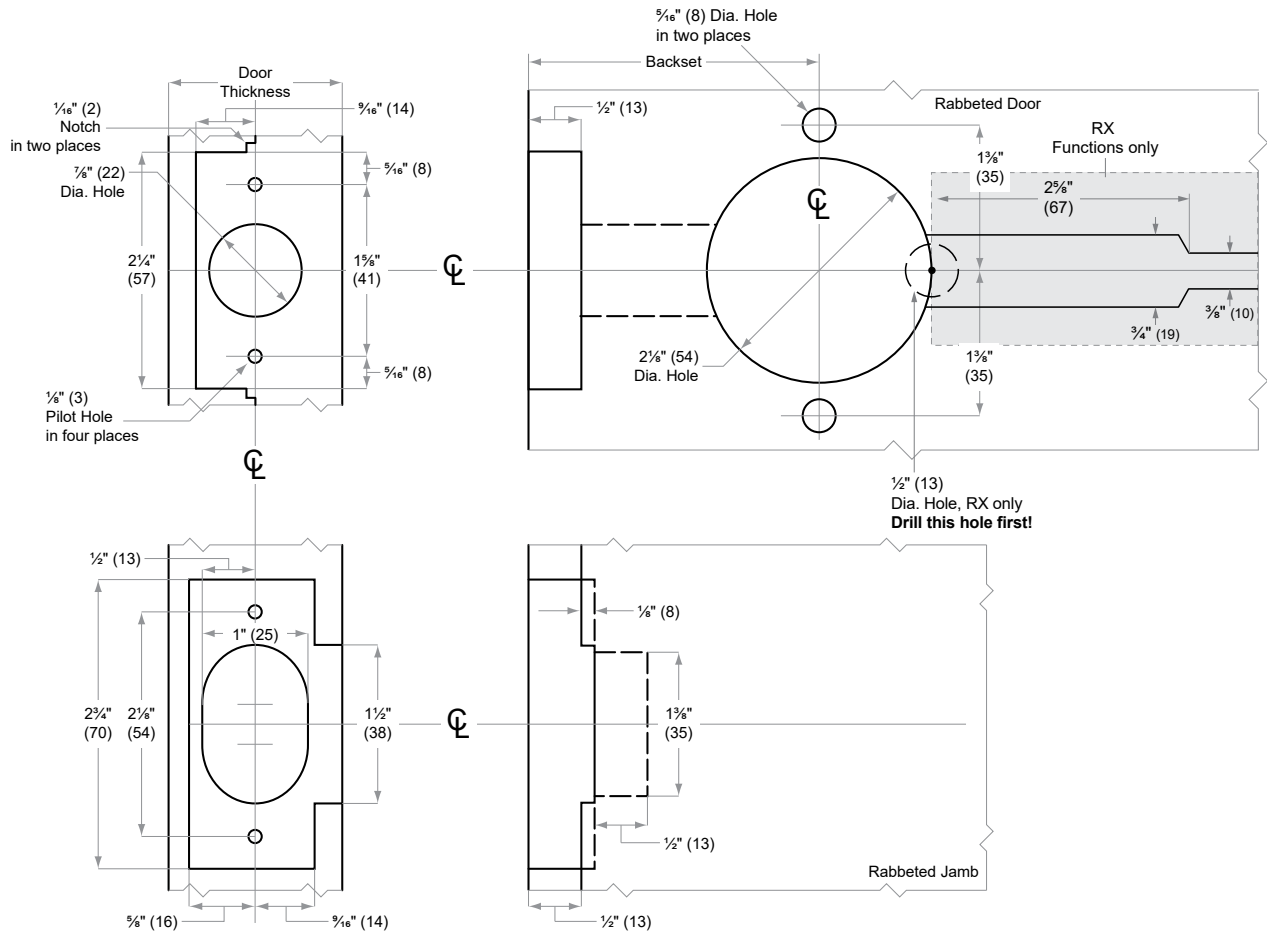




PC-Series

Models PC10– PC80

- Door Type:** Wood or Composite, rabbeted, flat
Door Thickness: 1 3/8" (35 mm)– 1 3/4" (44 mm)
Faceplate: Square Corner, 1" (25 mm) wide, 1/2" (13 mm) rabbeted and strike
Backsets: 2 3/8" (60 mm), 2 3/4" (70 mm)



Dimensions shown in parentheses () are in millimeters.

Door preparation template

PC307