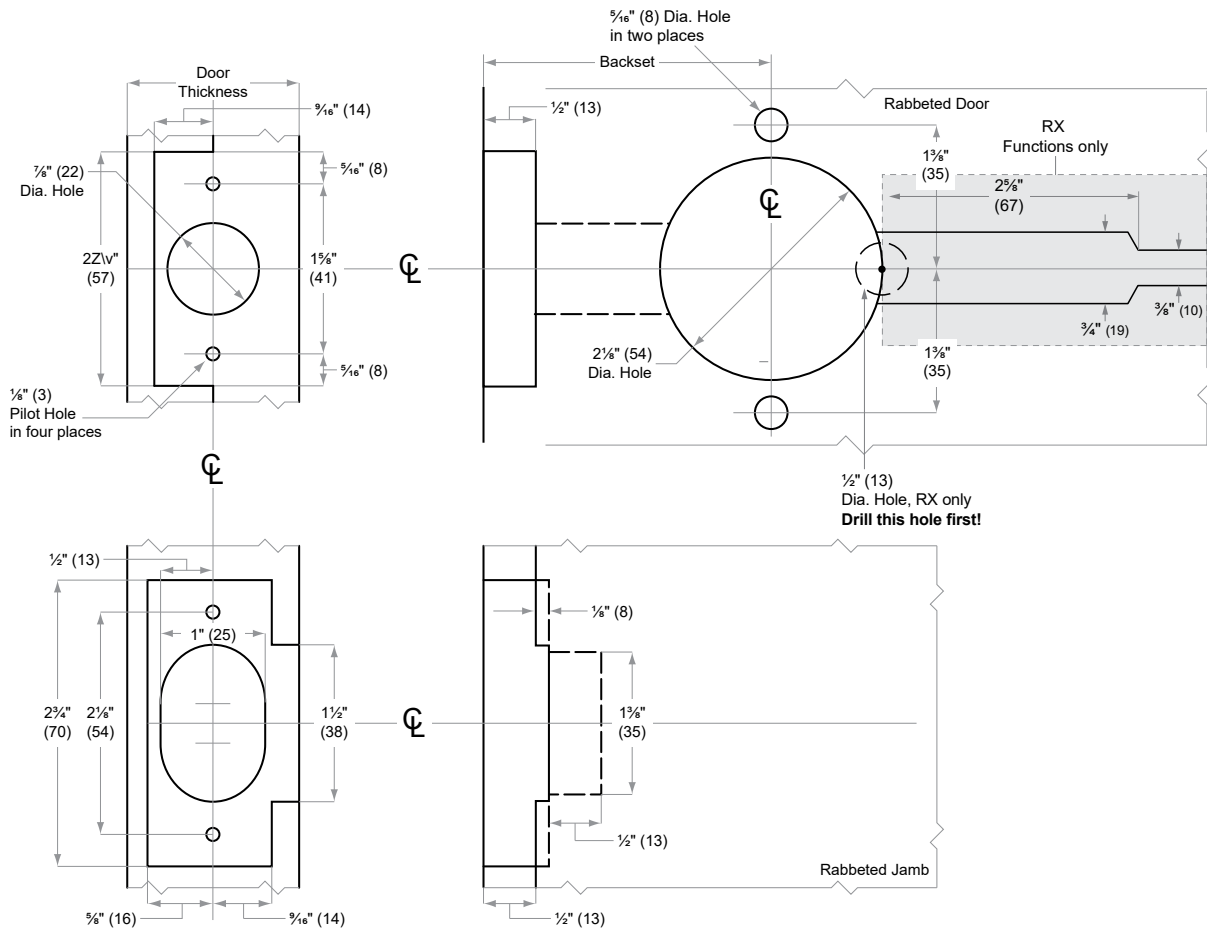




# PC-Series

## Models PC10– PC80

- Door Type:** Wood or Composite, rabbeted, flat  
**Door Thickness:** 1 3/8" (35 mm)– 1 3/4" (44 mm)  
**Faceplate:** Square Corner, 1 1/8" (29 mm) wide, 1/2" (13 mm) rabbeted and strike  
**Backsets:** 2 3/8" (60 mm), 2 3/4" (70 mm)



Dimensions shown in parentheses ( ) are in millimeters.

Door preparation template

# PC306