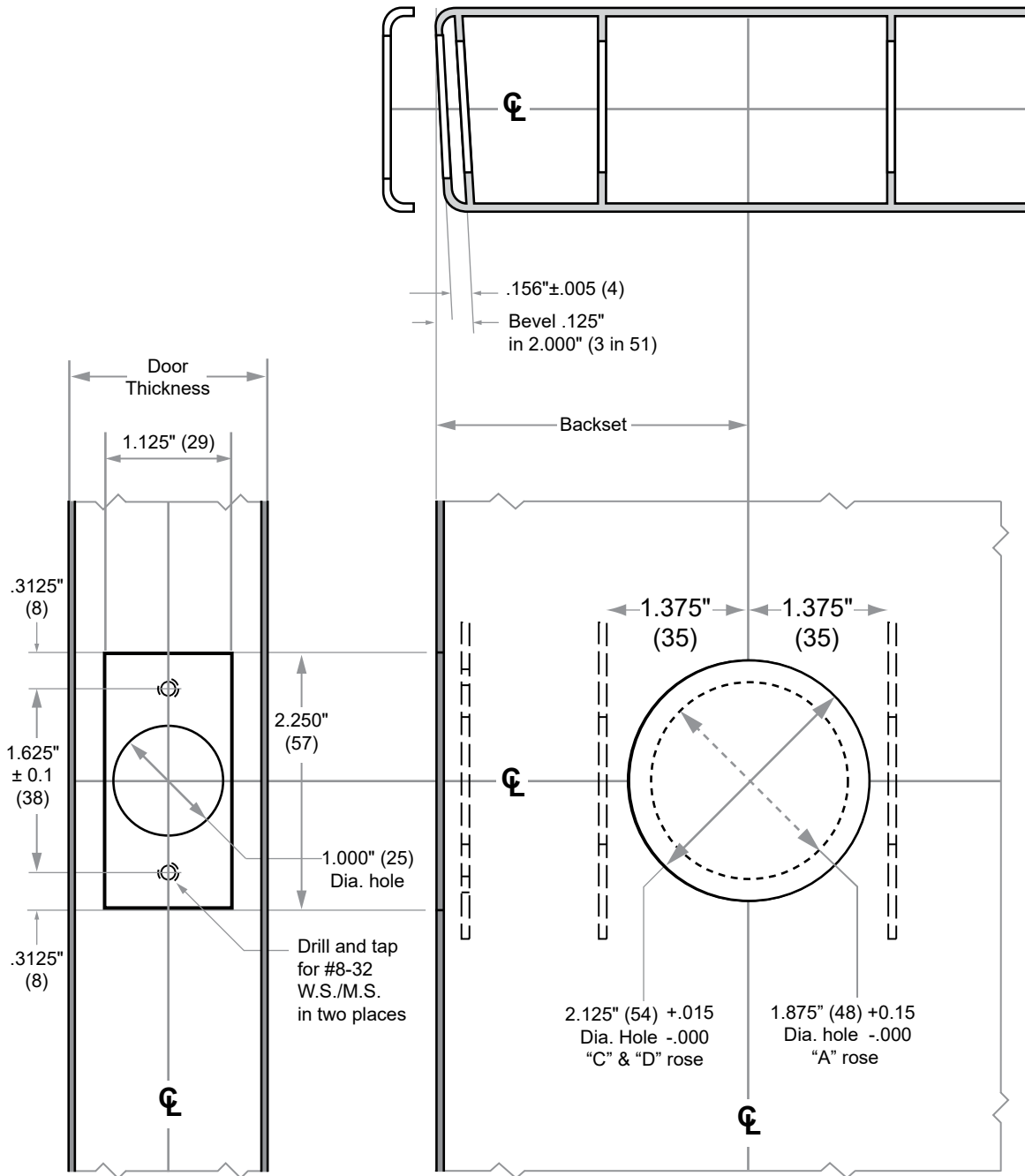




PT-Series

Model PT10, PT40

- Door Type: Metal, Flat or beveled
- Door Thickness: $1\frac{3}{8}$ " (35 mm)–2" (51 mm)
- Faceplate: Square Corner, $1\frac{1}{8}$ " (29 mm) wide
- Backsets: $2\frac{3}{4}$ " (70 mm)



Dimensions shown in parentheses () are in millimeters.

Door preparation template