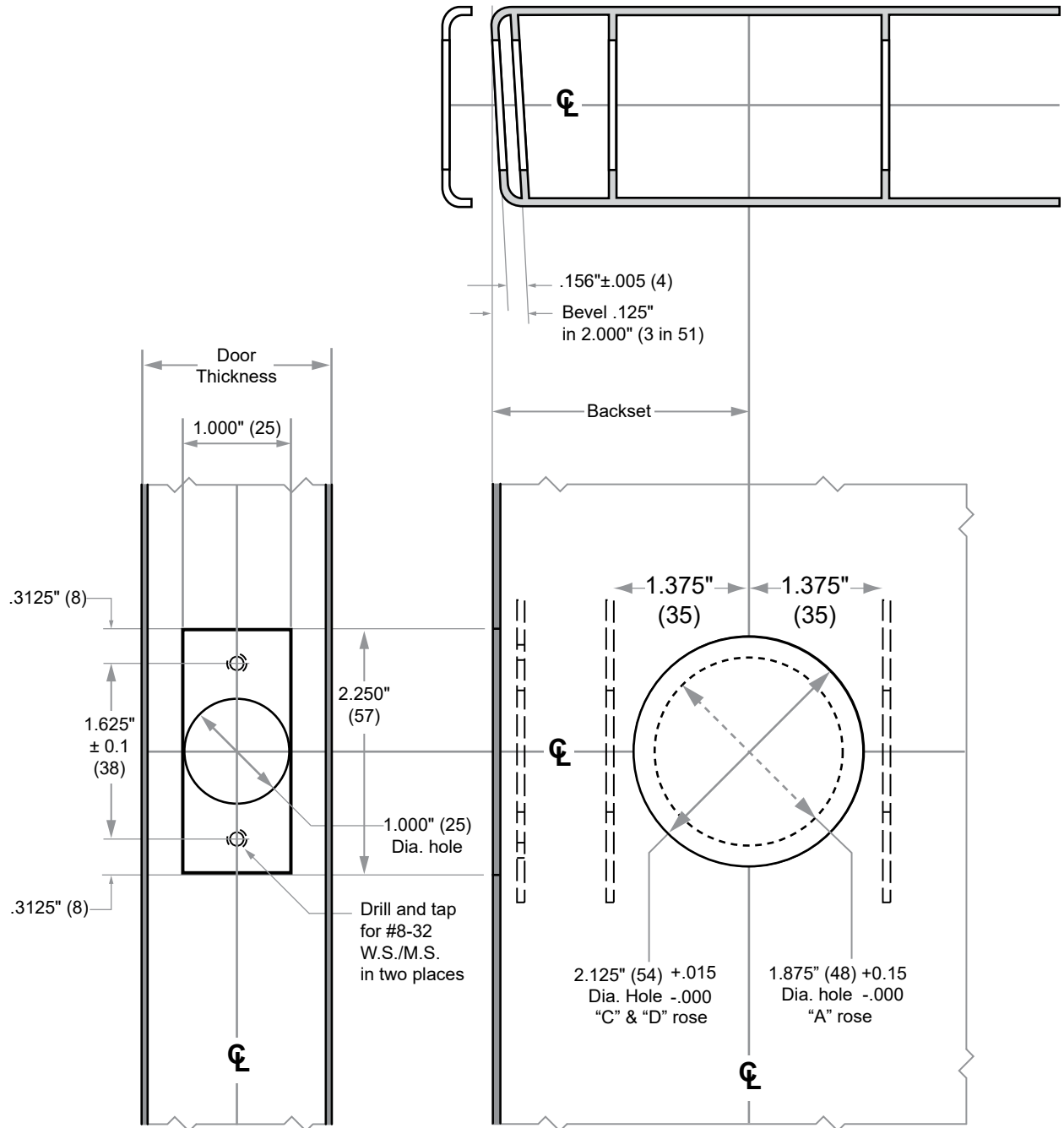




# PT-Series

## Model PT10, PT40

Door Type: Metal, Flat or beveled  
 Door Thickness:  $1\frac{3}{8}$ " (35 mm)–2" (51 mm)  
 Faceplate: Square Corner, 1" (25 mm) wide  
 Backsets:  $2\frac{3}{8}$ " (60 mm)



Dimensions shown in parentheses ( ) are in millimeters.

Door preparation template