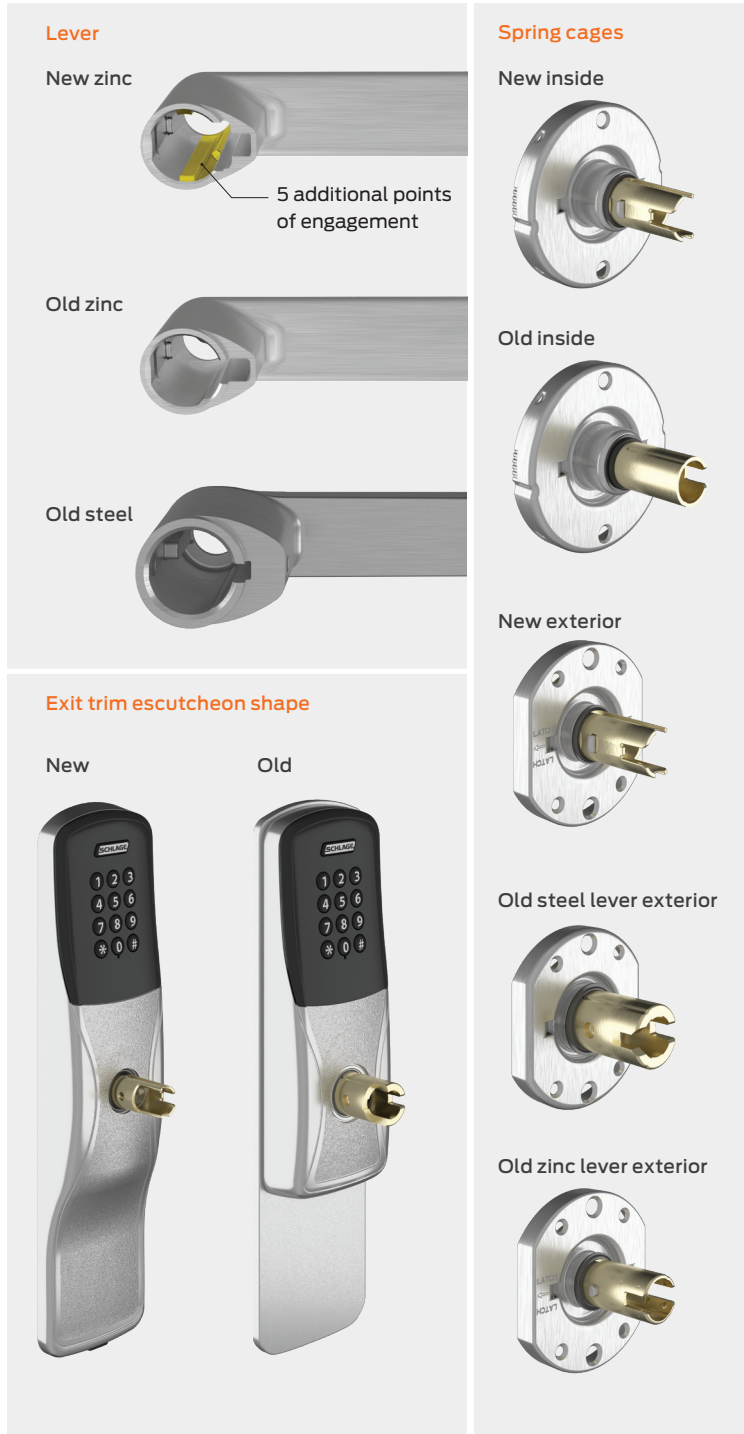




AD and CO Series performance improvements

Stronger and more durable than ever.

Visual part differences



To upgrade an existing AD or CO Series lock: Choose A+B+C+D+E+F (as appropriate).

Inside lever conversion

Lock	Chassis	A	Specify design:
All AD/CO Series models	All cylindrical and mortise	03-230	ATH, RHO, SPA, TLR, 8AT, 8RO, 8SP, 8TR

Outside lever conversion

Lock	Cylinder	B	Specify design:	
All AD/CO Series models	PD, LD	03-231	ATH, RHO, SPA, TLR, 8AT, 8RO, 8SP, 8TR	
	JD, RD	03-232		
	BD, GD	03-200		
	LD SAR	03-244		
	JD SAR	03-277		
	JD CO6	03-266		
	JD YA6	03-255		
	LD FA7	03-280		RHO, SPA, 8RO, 8SP
	JD CO7	03-235		RHO, SPA, TLR, 8RO, 8SP, 8TR
	JD MED	03-237		RHO, SPA, 8RO, 8SP
JD YA7	03-236	RHO, SPA, 8RO, 8SP		

ATH/8AT=Athens, RHO/8RO=Rhodes, SPA/8SP=Sparta, TLR/8TR=Tubular

Cylinder tailpiece conversion

Cylinder	# Pins	C
Key-in-Lever (KIL)		
PD Schlage	6	47258186
LD Falcon	6	47258186
LD FA7 Falcon	7	47258182
LD SAR Sargent 10L and 11L	6	47258179
Full Size Interchangeable Core (FSIC)		
JD, RD Schlage	6	23446339
JD CO6 Corbin 8000	6	47258180
JD CO7 Corbin 8000-7	7	47258180
JD MED Medeco 32*0201	6	47258183
JD SAR Sargent 6300	6	47258180
JD YA7 Yale 1220	7	47258184
Small Format Interchangeable Core (SFIC)		
BD, GD Schlage	7	47258187
JD YA6 Yale 1210 or Medeco 31*0100	6	47258181

Examples	A	B	C	D	E	F	Finish
AD MOR with JD MED	03-230-SPA	03-237-SPA	47258183	47258544	46929006	46928743	605
CO-200 EXIT with GD	-	03-200-ATH	47258187	EXT-CO-200-MS-GD-LHR	-	-	626

Cylindrical and mortise conversion service kits

Lock model	Reader	Chassis	Cylinder	D (includes screws)	E (includes screws)	F (includes O-ring and screws)	Specify finish:		
All AD Series models	All reader types	CYL	JD MED, JD YA6, JD YA7	47258544	46929006	46928743			
			All others	47258543	46929006	-			
		MOR	GD, BD	47258543	46929006	-			
			JD MED, JD YA6, JD YA7	47258544	46929006	46928743			
CO-100 Keypad		CYL	JD MED, JD YA6, JD YA7	47258544	23599210	47260707			
			All others	47258543	23599210	-			
		MOR	GD, BD	47258543	23599210	-			
			JD MED, JD YA6, JD YA7	47258544	23599210	47260707	626 (standard unless otherwise specified)		
CO-200 Keypad	CYL		JD MED, JD YA6, JD YA7	47258544	23599210	47260709			
			All others	47258543	23599210	-			
			MOR	GD, BD	47258543	23599210	-		
				JD MED, JD YA6, JD YA7	47258544	23599210	47260709	605, 606, 612, 619, 625, 643e, 626AM	
	PR, PRK, MS, MSK	CYL		All others	47258543	23599210	-		
				MOR	GD, BD	47258543	23599210	-	
					JD MED, JD YA6, JD YA7	47258544	23599210	47260705	
				All others	47258543	23599210	-		

Exit trim conversion service kits

Lock model	Reader	Chassis	Cylinder	D (includes base plate, escutcheon, spring cage and reader)	E (includes base plate, spring cage, screws and lever rotation stop)	F (includes O-ring and 6 screws)	Specify finish:
All AD Series models	All reader types	EXIT	All cylinders	-	46928545	47258398	
CO-100 Keypad		EXIT	All cylinders	EXT-CO-100-KP			626 (standard unless otherwise specified)
CO-200 Keypad		EXIT	All cylinders	EXT-CO-200-KP			
	PR	EXIT	All cylinders	EXT-CO-200-PR			605, 606, 612, 619, 625, 643e, 626AM
	PRK	EXIT	All cylinders	EXT-CO-200-PRK			
	MS	EXIT	All cylinders	EXT-CO-200-MS			
	MSK	EXIT	All cylinders	EXT-CO-200-MSK			

Note: For exit trims, the driver bar length may need to be cut. Refer to install guide for specified length.

